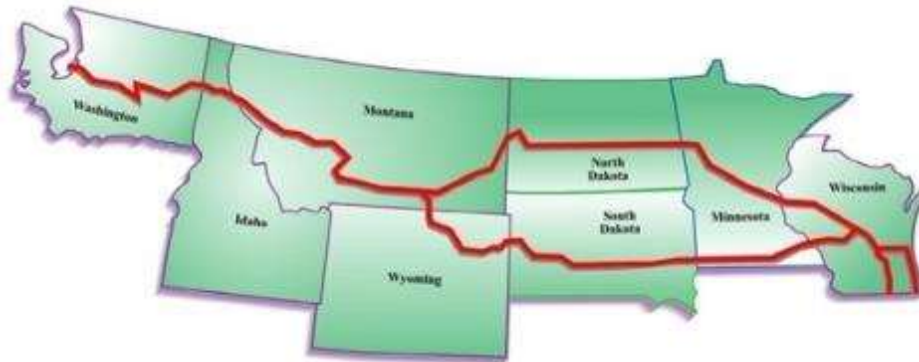




I-90/I-94 Corridor from Washington to Wisconsin Freight Industry Webinar

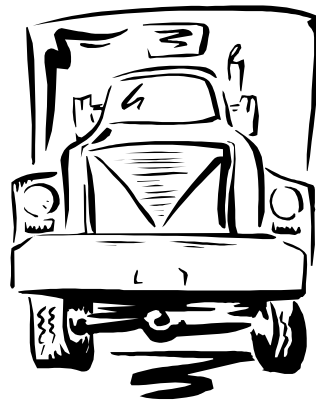


May 8, 2013

- Webinar Purpose
 - North/West Passage Background and Related Efforts
 - State DOT Freight Activities
 - Freight Industry Feedback
 - Questions and Next Steps
- 
- A map of the North/West Passage corridor, showing the route from the Pacific Northwest through the Rocky Mountain states (Montana, North Dakota, South Dakota) to the Midwest (Minnesota, Wisconsin). The map is overlaid on the agenda text.

Webinar Purpose

- Provide the opportunity to
 - Introduce North/West Passage freight efforts
 - Highlight freight activities in member states
 - Continue learning about freight industry needs for I-90/I-94 corridor



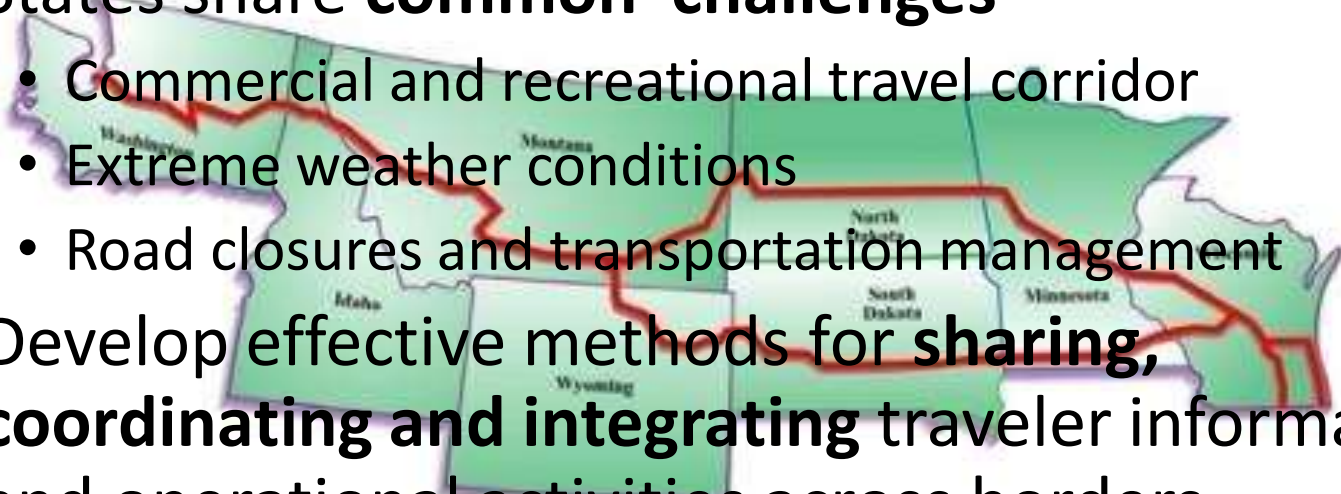


Background

What is North/West Passage?
Freight Related Projects



- North/West Passage
 - Transportation Pooled Fund 5(093) **since 2003**
 - States from WA to WI along **I-90/I-94**
 - States share **common challenges**
 - Commercial and recreational travel corridor
 - Extreme weather conditions
 - Road closures and transportation management
 - Develop effective methods for **sharing, coordinating and integrating** traveler information and operational activities across borders



- Projects with freight related focus
 - i90i94travelinfo.com Website (2008)
 - Traveler Information Dissemination to Commercial Vehicle Operators (2010)
 - Commercial Vehicle Operators Outreach Survey (2012)
 - Regional Permitting (2008 to Present)



Background

i90i94travelinfo.com

- Corridor-wide traveler information website
- Website provides
 - Live camera images and weather conditions
 - Links to each state's detailed website
 - Commercial vehicle restriction information
 - Truck stop information (via TruckStopInfoPlus.com)
 - Rest area locations and information

i90i94travelinfo.com



North/West 
Passage 

Home CVO Restrictions Truck Stops Rest Areas About Feedback Contact Us

Visit our new [beta site](#).

Welcome to the [North/West Passage](#) Corridor Traveler Information Website. Click on the blue dots below to view current camera images and weather conditions at key locations along the corridor. Or, click on a state for a close view with more information. Please let us know if you have any suggestions on improving this website by taking a [short survey](#).

WASHINGTON MONTANA NORTH DAKOTA MINNESOTA WISCONSIN
IDAHO WYOMING SOUTH DAKOTA

Disclaimer © 2007-2012

Traveler Information Dissemination to Commercial Vehicle Operators

- Researched and recommended (based on member input and literature review, no formal outreach to trucking industry)
 - Options to enhance traveler information systems
 - Corridor-wide email push
 - Uniform method of disseminating permit status information*
 - Enhance state phone/website geographic information
 - Freight specific portion of i90i94travelinfo.com
 - Freight outreach/training about North/West Passage tools*

Regional Permitting

- Ultimate goal has been uniformity in permitting
 - Input from trucking industry shifted focus to harmonization of rules and identifying recommended corridor standards for signing, escorts, warning lights and hours of operation
 - Challenges with implementation
 - Modifying legislation
- Recommendation from Traveler Information Dissemination to Commercial Vehicle Operators project

CVO Outreach Survey

- Conducted survey in 2012 to
 - Identify enhancements to i90i94travelinfo.com
 - Learn what traveler information tools are used by trucking industry and what gaps exist
 - Develop a communication and outreach plan for i90i94travelinfo.com
- Recommendation from Traveler Information Dissemination to Commercial Vehicle Operators project



State DOT Freight Activities

Highlight 2-3 Freight Activities Each



Oversize/Overweight Permits Website Updated Daily

[News](#) | [Employment](#) | [Good To Go!](#) | [Contact Us](#) | [WSDOT Home](#)



[Email updates](#) 

[Traffic & Cameras](#) | [Projects](#) | [Business](#) | [Environment](#) | [Maps & Data](#)

[Search](#)

You are Here: [Home](#) > [Commercial Vehicle Website](#) > [Restrictions](#)

Most Requested

- [Commercial Vehicle Home](#)
- [Oversize/Overweight Permitting](#)
- [Superload Requirements](#)
- [Self-Issue Permits](#)
- [Legal Weight](#)
- [I-5 Corridor Traveler Information](#)

Truck Travel

- [Statewide Traveler Information](#)
- [Mountain Passes](#)
- [Construction](#)
- [Travel Alerts](#)
- [Current Weather](#)
- [Safety Rest Areas](#)
- [Holiday Restrictions](#)
- [I-5 Corridor Travel](#)



[Zoom In](#)

Zoom in on the map to view more routes.

Oversize/Overweight Restrictions

Showing 8 of 226 Restrictions [Printer Friendly](#)

US 97, MP: 44.5 to 46.5, Direction: Both

New **Date Updated: 4/30/2013 1:10 PM**
Original Date: 6/12/2012 12:00 AM
 US97 from milepost 44.5 to 46.5, both directions. No loads over 12' wide 24 hours a day. No detour available.*WSDOT Does Not Guarantee Height Clearances*

[More](#)

US 12, MP: 165, Direction: Both

New **Date Updated: 4/30/2013 1:00 PM**
Original Date: 4/30/2013 12:00 AM
 Effective May 6th to May 10th on US 12, milepost 165, both directions (Rimrock Tunnel) all overwidth loads prohibited from 6am-6pm, Monday-Friday. No detour is available.


[More](#)

I-90, MP: 62 to 54, Direction: W


New **Date Updated: 4/29/2013 9:30 AM**
Original Date: 4/4/2013 12:00 AM
 CURRENT RESTRICTIONS Nighttime: April 26th - October: no loads over 12' wide nightly; 8pm to 9am. All oversize loads must use the right lane and travel through the snowshed. Daytime: May 1st, no loads over 12' wide; 9am to 8pm. April 26th - October; no loads over 14' wide during all other hours except Fridays from 9am to 10pm. All oversize loads must use the right lane and travel through the snowshed.

Online Self-Issue of Permits

News | Employment | Good To Go! | Contact Us | WSDOT Home



Washington State
Department of Transportation

[Email updates](#) 

Traffic & Cameras | Projects | Business | Environment | Maps & Data

[Search](#)

You are here: [Home](#) > [Commercial Vehicle](#)

WSDOT

- [Commercial Vehicle Home](#)
- [Oversize and Overweight Permits](#)
- Self- Issue Permit Types

Most Requested

- [Maps](#)
- [Permit Program Login](#)
- [Restrictions](#)

Contact Us

[Commercial Vehicle Services](#)
7345 Linderson Way SW
PO Box 47367
Tumwater, WA 98504-7367

Online Self-Issue Permits

WSDOT's [online permitting](#) program is a new web based program available using the Internet and require [Internet Explorer 5.0](#) or newer.

Self-issued permits are only allowed for your company, and transactions are only completed by Visa or MasterCard. Self-issuers are only allowed to add or delete fleet vehicles or change plate numbers.

When authorized, self-issuers are given a login and password to gain secure access to the [online permitting program](#).


Available Self-Issue Permits

Initially self issuing companies will be limited to the following types of permits:

- Department of Licensing [trip permits](#) and [fuel permits](#) (3 day)
- [Single Trailer permit](#) allowing for a divisible load carried on a semi-trailer up to 56 ft (30 day)
- [Double Trailer permit](#) allowing for a divisible load carried on a set of double trailers up to 68 ft. (30 day)
- [61 ft. non-divisible load](#) on a semi trailer with a rear overhang not to exceed 15 ft. (30 day)

Email Notification for Restrictions and Closures

[News](#) | [Employment](#) | [Good To Go!](#) | [Contact Us](#) | [WSDOT Home](#)



**Washington State
Department of Transportation**

[Email updates](#)

Traffic & Cameras
Projects
Business
Environment
Maps & DataSearch

You are here: [Home](#) > [Commercial Vehicle](#)

WSDOT

- [Commercial Vehicle Services](#)
- [CVISN](#) (Weigh Station Bypass)
- [Oversize and Overweight Permits](#)
- [Holiday Restrictions](#) (pdf 153kb)

Most Requested

- [Legal Weight Charts](#) (pdf 23kb)
- [Permit Program Login](#)
- [Maps](#)
- [Restrictions](#)

Contact Us

[Commercial Vehicle Services](#)
7345 Linderson Way SW
PO Box 47367


Commercial Vehicle Services

We strive to efficiently and safely move commercial vehicle freight traffic in conjunction with the motoring public, while protecting our roadway infrastructure.


Trucking News

- Effective March 1, 2013, transponders will cost \$35 each.
- [Chain Requirements](#)
- [Mountain Passes](#)
- [Weigh2GoBC](#) - You can now enroll in British Columbia's commercial vehicle e-screening program.
- [Self-Issue Permits](#)
- [Use extra care with Overheight Loads](#) (pdf 2mb)
- [Sign-up for e-mail alerts](#) for oversize/overweight restrictions and closures.

[Weigh Station Bypass-CVISN](#)



[Oversize/Overweight Permits](#)



Multistate I-5 Corridor Traveler Information

- Rest stop locations
- Truck stop locations
- Permits
- Restrictions

I-5 Corridor Traveler Information

Home | [Washington](#) | [Oregon](#) | [California](#)

Traveler information for each of the states:

- [Washington DOT](#)
- [Oregon DOT](#)
- [California DOT](#)
- [I-5 / I-94 Corridor Website](#)

Safety Rest Area Information:

- [Washington](#)
- [Oregon](#)
- [California](#)

Local Weather Information:

- [Washington](#)
- [Northern Oregon](#)
- [Southern Oregon & Northern California](#)
- [Central California](#)
- [Southern California](#)

Truck Stop Locations:

- [Washington](#)
- [Oregon](#)
- [California](#)

Truck Permits:

- [Washington](#)
- [Oregon](#)
- [California](#)

Trucker Restrictions

- [Washington](#)



511
Travel Info

Dial 511 anywhere in WA, OR or Northern California for current traffic information

Canadian Border Traffic Camera

Canadian Border



Seattle, WA



Portland, OR



Reading, CA

Los Angeles Traffic Camera



Idaho Transportation Department





Montana DOT



Freight Web Portal

Road condition forecasts to support freight movement

WYDOT Commercial Vehicle Operator Portal (dev)
Road Impact Forecasts

Worst-Case forecasts for Tue Mar 12, 00:00 to 11:59 (Mountain Time)

Legend

Forecast	Time Frame	Impact	L	M	H
Worst-Case	0-12 Hours	Visibility Forecasts	●	●	●
Visibility	12-24 Hours	Wind Forecasts	■	■	■
Wind	24-36 Hours	Surface Forecasts	▲	▲	▲
Surface	36-48 Hours	NWS Alerts	■	■	■

Resources

- Width, Height, and Weight Restrictions
- Truck Parking Areas

Impact Levels

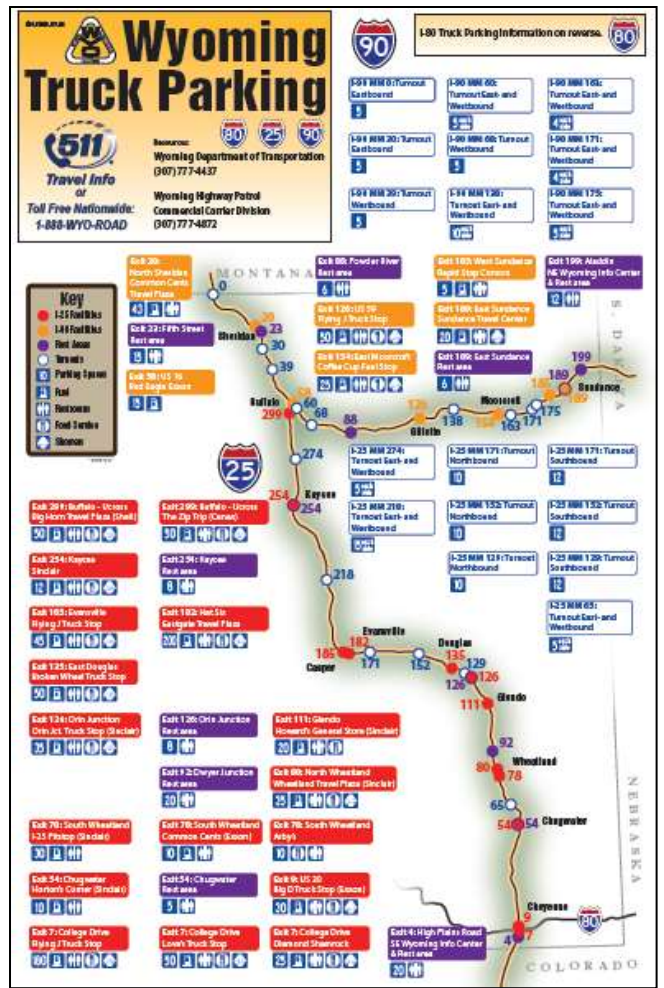
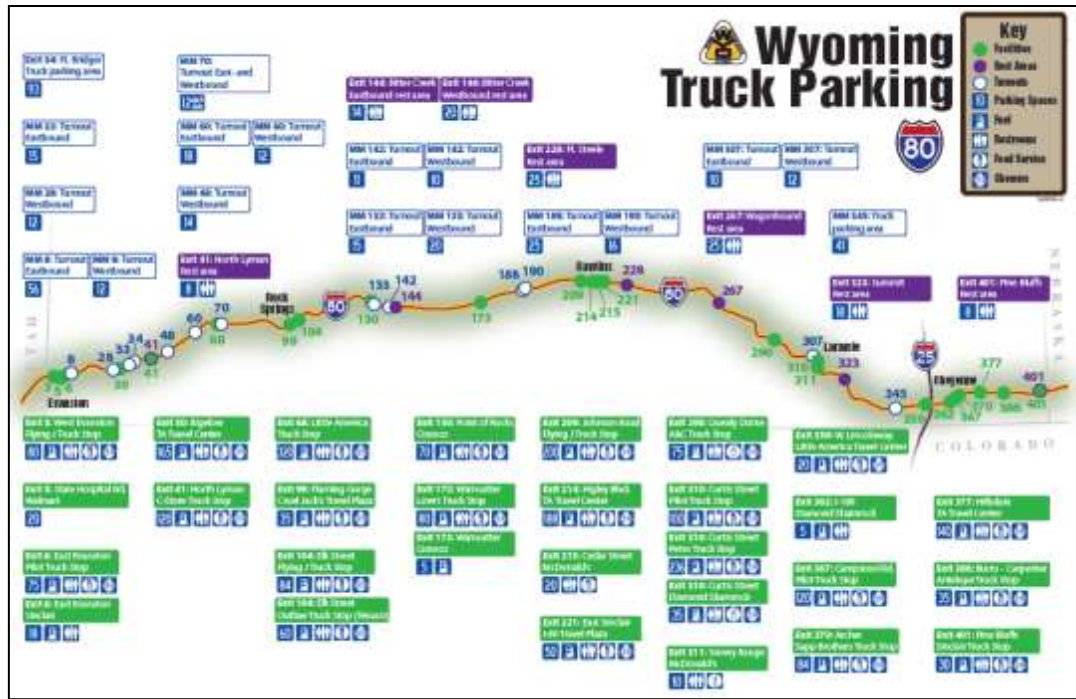
Impact Level	Recommended Action
Low	Minimal impacts expected, use general caution (see forecasts and present conditions).
Moderate	Some impacts expected, use extra caution (see forecasts and present conditions).
High	Dangerous impacts expected, use extreme caution, delay travel or consider alternate route (see forecasts and present conditions).

Worst-Case forecasts for Tue Mar 12, 00:00 to 11:59 (Mountain Time)

Location	Type	Impact	Title	Message	NWS Alert
WY 28 Farson through South Pass (mp 0-69)	●	High	Bogus Visibility Title	Bogus visibility message	
I-25 CO state line to Chugwater (mp 0-54)	■	High	Bogus Wind Title	Bogus wind message	
I-25 Chugwater to Wheatland (mp 54-80)	■	Moderate	Bogus Wind Title	Bogus wind message	
I-25 Chugwater to Wheatland (mp 54-80)	■	Moderate	Bogus Visibility Title	Bogus visibility message	
I-25 Wheatland to Glendo (mp 80-115)	■	Moderate	Bogus Wind Title	Bogus wind message	

Truck Parking Maps

Guide to rest areas and other truck parking facilities along I-80, I-29, I-90





Wyoming DOT

Restrictions Notification

Wyoming State Government | [Home](#) | [Business](#) | [Government](#) | [Visitor](#)

Wyoming DOT
of Transportation

Wyoming Travel Information Map
Having trouble? Try our [loc:basediti.map](#) or [www.wydot.info](#)
All roads are considered open unless otherwise stated.
[Click on a road below to read surface and atmospheric conditions.](#)

511

Zoom To: Wyoming | Close Pop-Up | Auto Refresh in 7:09, 5 auto refreshes remaining | Pause

Map | Satellite | Hybrid | Terrain

Sheridan
Highway I 90, US 14, US 87 from milepost 20.51 to 28.29
Memo 13-17
Width restriction: 14 ft
Effective from 2013-03-25
Contact: Jerry Buckley, 307-674-2126

Surface Conditions
Atmospheric Conditions
Closures & Alerts
Web Cameras
Weather Stations
Construction Projects
Dynamic Message Signs
Rest Areas
Truck Parking
Width, Height, and Weight Restrictions

Refresh Information
Go Statewide

Surface Conditions
Dry
Wet
Slick in spots
Slick
Drifted snow
Closed
More than 1 condition

Atmospheric Conditions
Fog
Rain
Snowfall
Blowing snow
Strong winds
Reduced Visibility
More than 1 condition

Other Links
• [WTI Map Help and FAQ](#)
• [Chain Law](#)
• [Observed Radar Map](#)
• [Observed Temperatures Map](#)
• [Discovery Weather Map](#)

Contact Us | Copyright 2007-2013 | Disclaimer | Privacy Policy



Email Updates

To sign up for updates or to access your subscriber preferences, please enter your contact information below.

Subscription Type

Email Address

Your contact information is used to deliver requested updates or to access your subscriber preferences.

[Privacy Policy](#) | [Help](#)

North Dakota DOT

- CVISN
- Automated routing and permitting
- WASHTO Regional Permit
- Traveler info webpage and app





South Dakota DOT





Minnesota DOT





Wisconsin DOT





Freight Industry Feedback

Corridor Needs

Thoughts about North/West Passage

Questions about State Freight Activities





Freight Industry Feedback

What is your biggest daily challenge traveling I-90/I-94?

Are there specific rough spots on the corridor?

Are there unique freight needs for I-90/I-94?

Should we talk more with freight?

What kind of continued interaction might be desired?

Are there existing association or industry meetings to coordinate with?

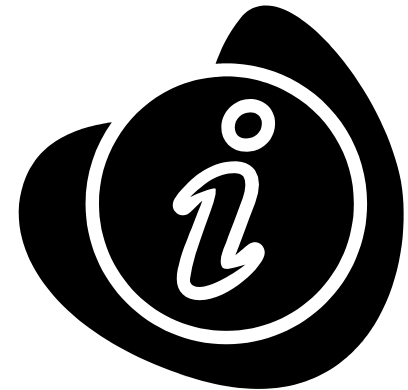


Questions and Next Steps



Questions and Next Steps

- For more information
 - **Vince Garcia, Wyoming DOT**
North/West Passage Project Champion
307-777-4231
vince.garcia@wyo.gov
 - **Bill Legg, Washington DOT**
North/West Passage Chair
(360) 705-7994
leggb@wsdot.wa.gov



www.nwpassage.info